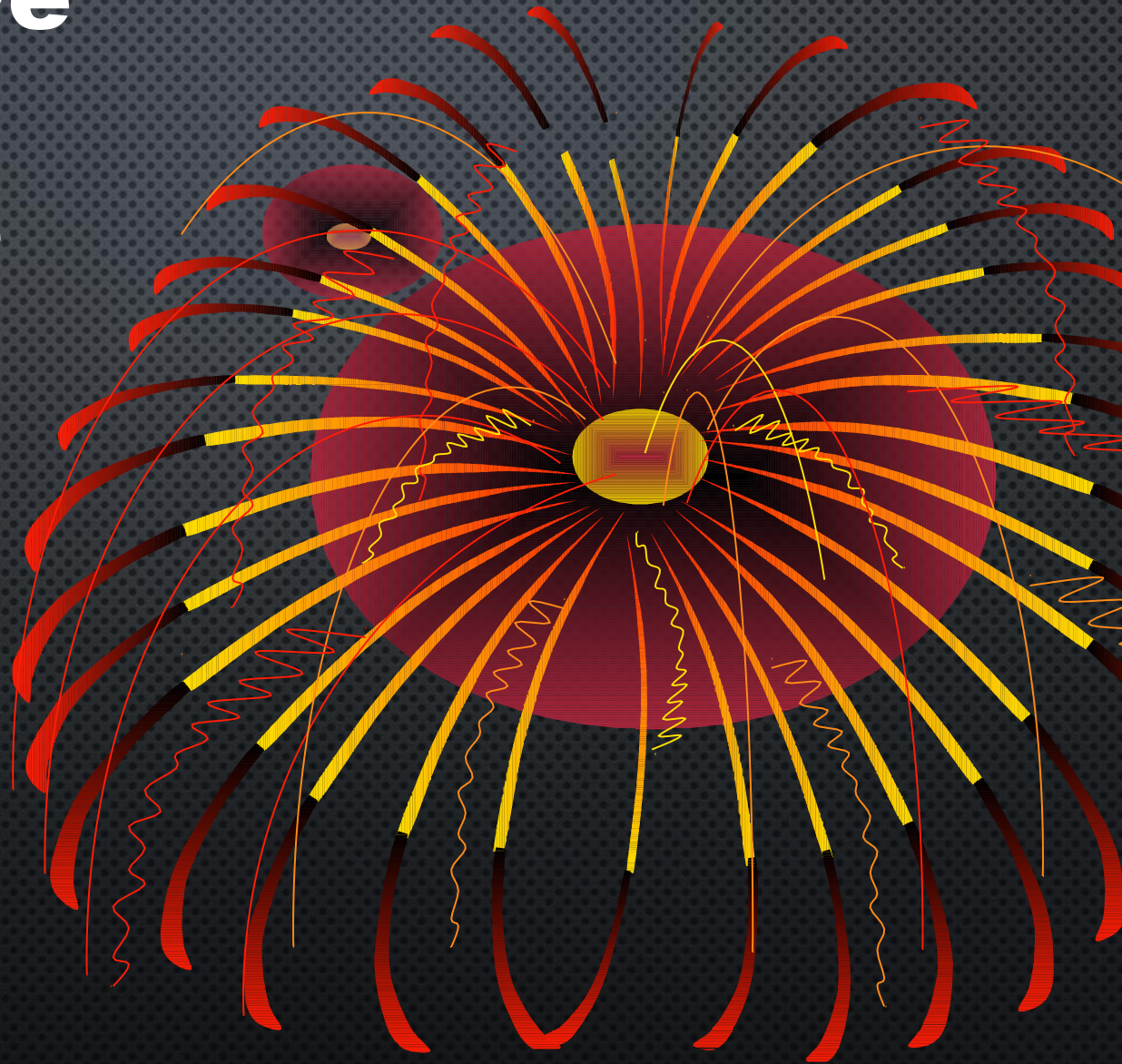
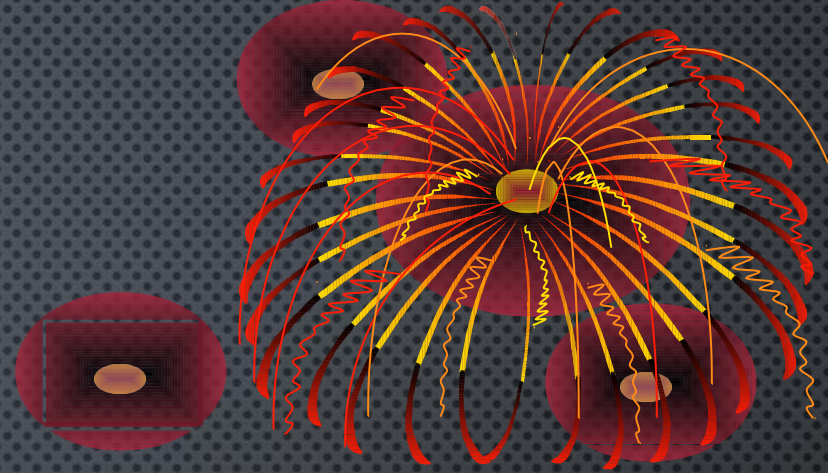


# Comparative and Superlative Adverbs





**Adverbs are words that describe or modify other words.**

**\*The comparative form of an adverb compares two things.**

**\*The superlative form of an adverb compares three or more things.**

**Adverbs compare VERBS**



LIKE ADJECTIVES, SOME  
ADVERBS CAN TAKE  
COMPARATIVE AND SUPERLATIVE  
forms, with -er and -est.

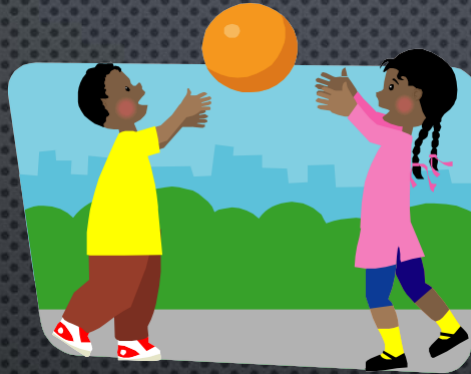


**Sally works hard.**

**Steve works harder than Sally.**

**Kathy and Sue work the hardest  
of all.**

FOR ADVERBS ENDING IN -LY, ADD "MORE" TO THE ORIGINAL ADVERB TO FORM THE COMPARATIVE, AND "MOST" TO FORM THE SUPERLATIVE.



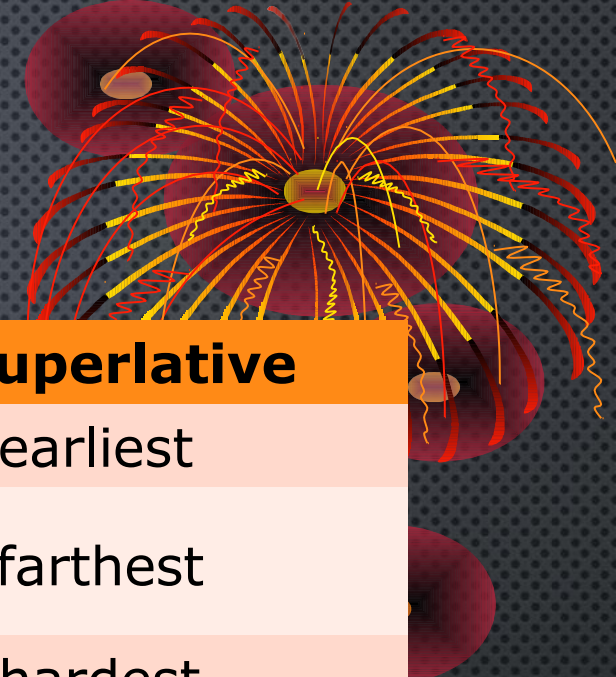
**The bird sings loudly.**

**The children sing more loudly than the bird.**

**Of all three, Pete sings the most loudly.**

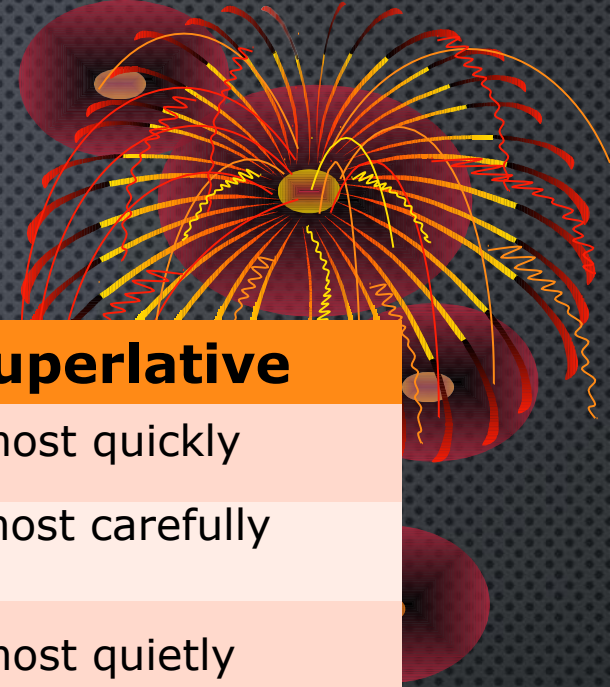


# LIST OF ADVERBS



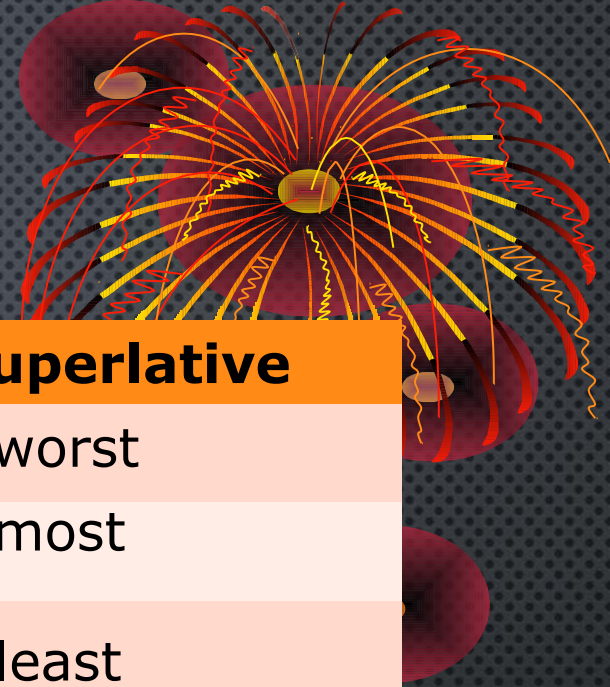
<b>Adverb</b>	<b>Comparative</b>	<b>Superlative</b>
Early	Earlier (than)	The earliest
Far	Farther/further (than)	The farthest
Hard	Harder (than)	The hardest
High	Higher (than)	The highest
Late	Later (than)	The latest
Low	Lower (than)	The lowest
Near	Nearer (than)	The nearest
Slow	Slower (than)	The slowest
Soon	Sooner (than)	The soonest
Straight	Straighter (than)	The straightest

# IRREGULAR ADVERBS



<b>Adverb</b>	<b>Comparative</b>	<b>Superlative</b>
Quickly	More quickly (than)	The most quickly
Carefully	More carefully (than)	The most carefully
Quietly	More quietly (than)	The most quietly
Happily	More happily (than)	The most happily

# IRREGULAR ADVERBS



<b>Adverb</b>	<b>Comparative</b>	<b>Superlative</b>
Badly	worse (than)	The worst
much	more (than)	The most
Little	Less (than)	The least
Well	Better (than)	The best