

Inheriting characteristics

These animals are all sheep. They all look **different**. Why do you think they look **different**??



•The sheep look **different** because they have **different** characteristics.

Some have **short wool**.

Some have **black faces**.

Some have **white faces**.

•The sheep are **different** colors



The sheep have **different** characteristics because they have **different** parents.



- We say that animals inherit characteristics from their parents.



Every tiger has a **different pattern of strips.**

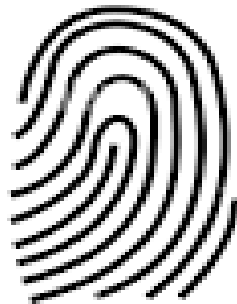
A tiger cub's **strips** are not the same as its parents' **strips.**



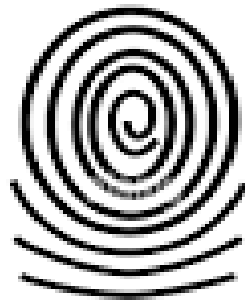
This is a human **fingerprint**



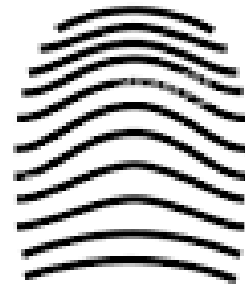
Every person has a **different** pattern in their fingerprint.



loop

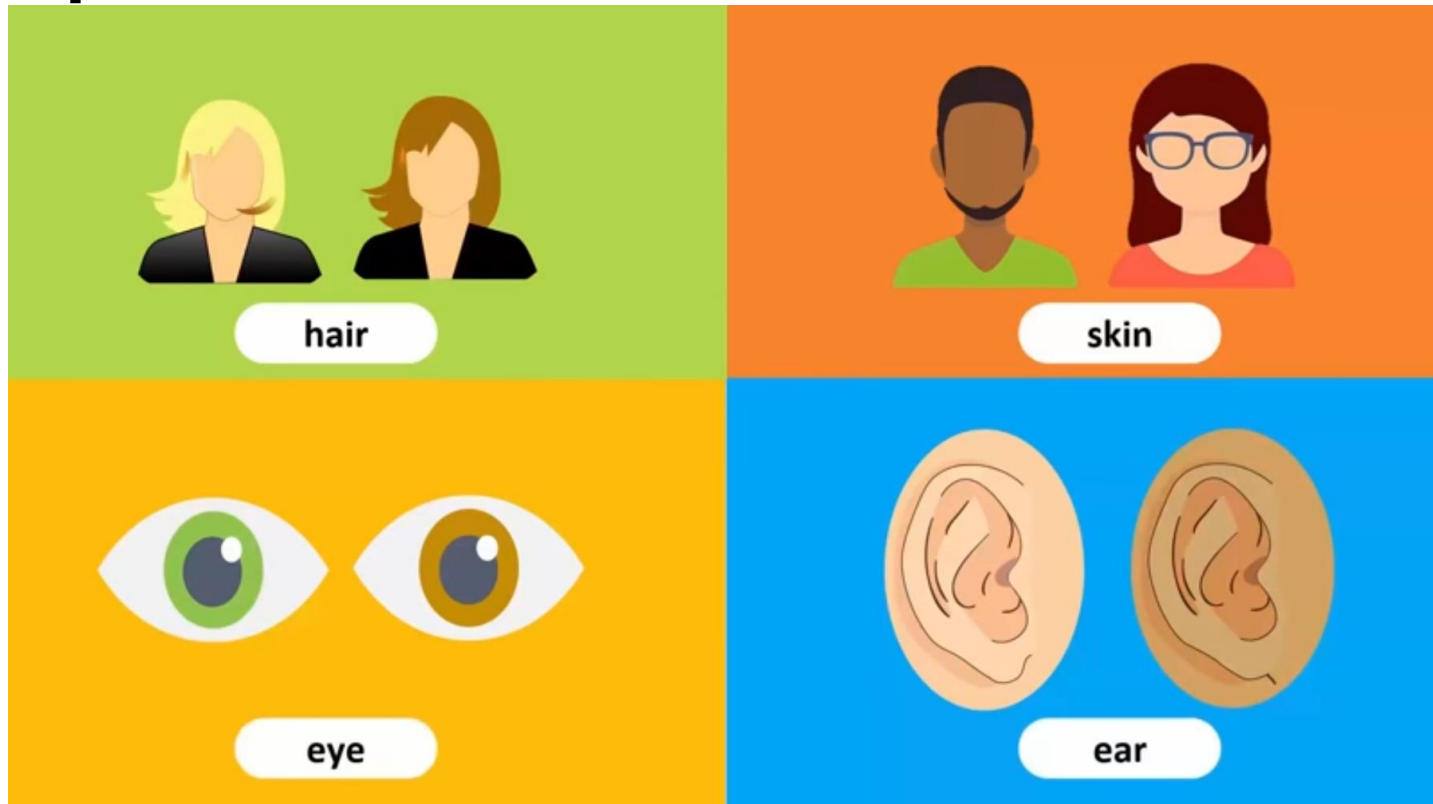


whorl



arch

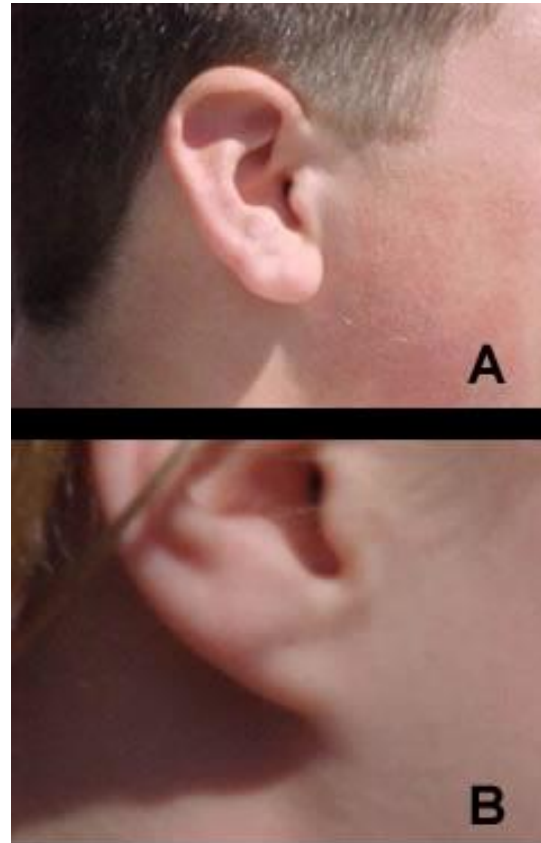
There are many other characteristics we **inherit** from our parents.



Freckles



Free or fixed ear



Left handed or right handed

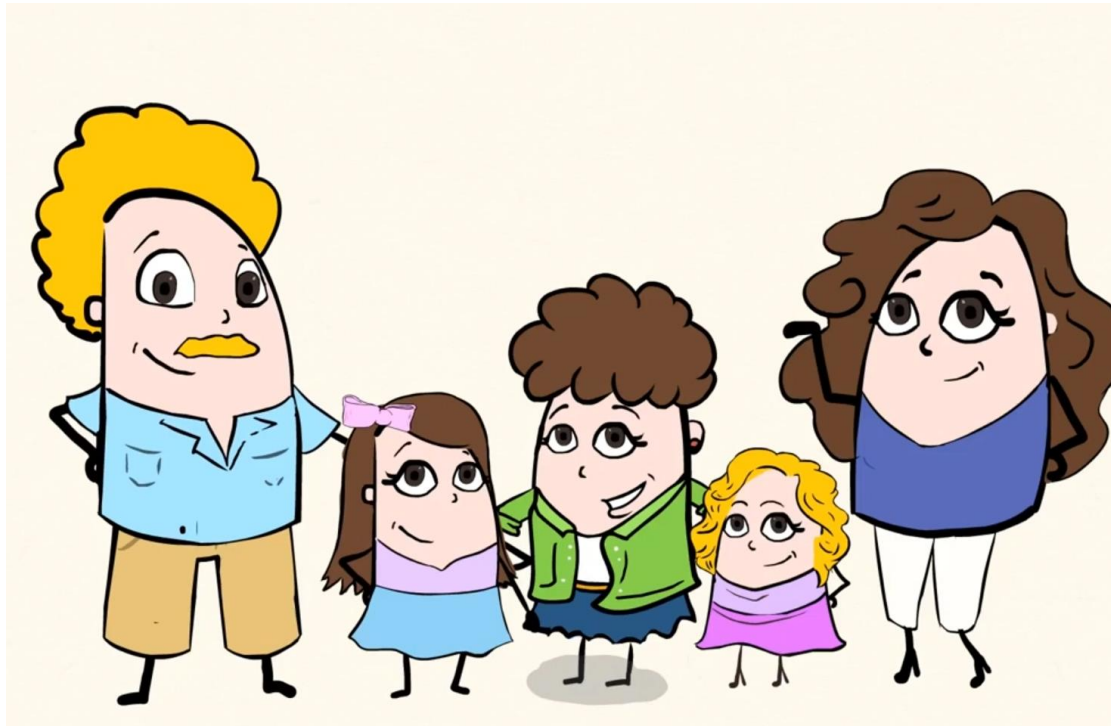


Straight or curly hair



Tongue rolling



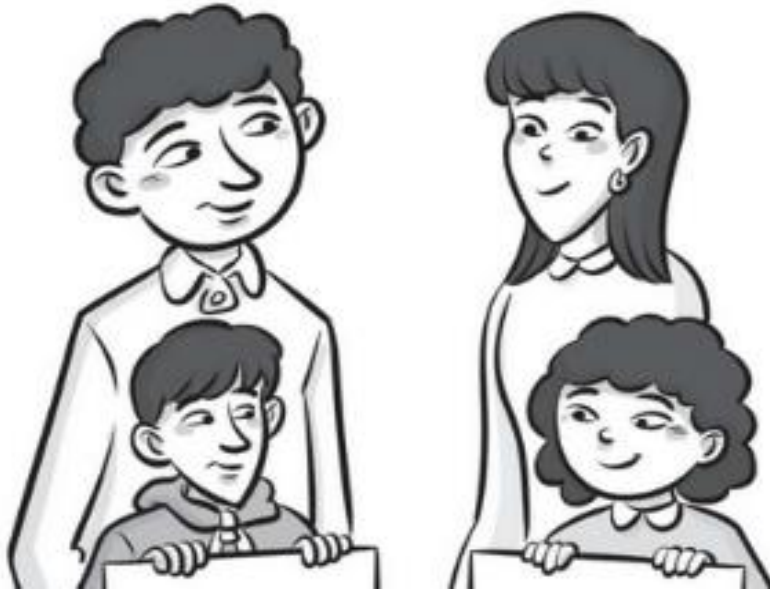


These children are **identical**
twins. they look **the same**



- We say they are not identical.





Sara has **inherited** her round face from her Dad.

She has **inherited** her nose from her Mom .

Adam has **inherited** his nose from his Dad.
He has **inherited** his hair from his Mom



parents -
darker brown



parents -
lighter brown



puppy -
darker brown



puppy -
lighter brown

